

PLAN VIEW

ELEVATION A-A

NOTES:

- 1) USE MINIMUM 3000 PSI STRENGTH CONCRETE AT 28 DAYS WITH 5-7% AIR ENTRAINMENT.
- 2) USE MINIMUM 60KSI YIELD DEFORMED REINFORCING STEEL.
- 3) FOUNDATION REQUIRES 1500 PSF RATED SOIL.
- 4) TOP OF CONCRETE AT BASEPLATE LOCATIONS TO BE LEVEL AND IN ONE PLANE $\pm 1/8"$.
- 5) DIAGONAL MEASUREMENTS ENDWALL TO ENDWALL MUST BE EQUAL WITHIN $1/2"$.
- 6) BASEPLATE AND LATERAL BUMPER ANCHORS SUPPLIED BY METTLER TOLEDO. USE BASEPLATES AND LATERAL BUMBERS AS TEMPLATES TO LOCATE EXPANSION BOLTS DURING SCALE INSTALLATION.
- 7) RAMP LENGTH: -PER LOCAL REGULATIONS
-1/2" SLOPE PER FOOT TYPICAL
- 8) 6" OF GRAVEL MAY BE USED UNDER APPROACHES AND SLAB AS AN OPTION TO IMPROVE DRAINAGE.
- 9) MINIMUM DEPTH OF COVER FROM THE SURFACE FOR REBAR IS 2". HOWEVER IN PLACES WHERE THE SURFACE IS IN CONTACT WITH THE GROUND, THE REBAR COVER SHOULD BE 3".
- 10) CONTRACTOR SUPPLIES:
-EXCAVATION
-CONCRETE AND FORMS
-REINFORCING STEEL
-1 1/2" DIA CONDUIT
-CURB ANGLE ASSEMBLIES (DETAIL G)
-BUMPER PLATE ASSEMBLIES (VIEWS J-J & N-N)
-END WALL ROCK GUARD (DETAIL G)
-6" SCH. 40 PIPE.

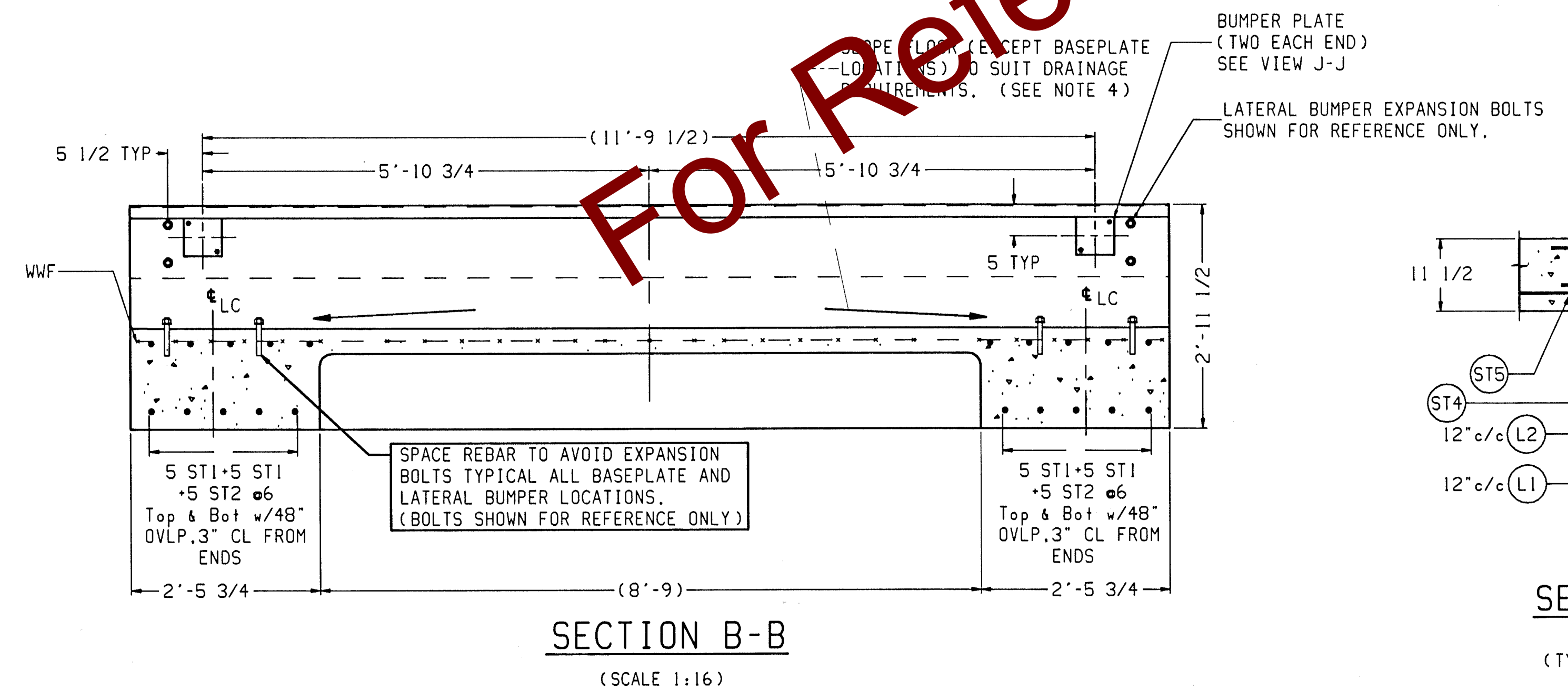
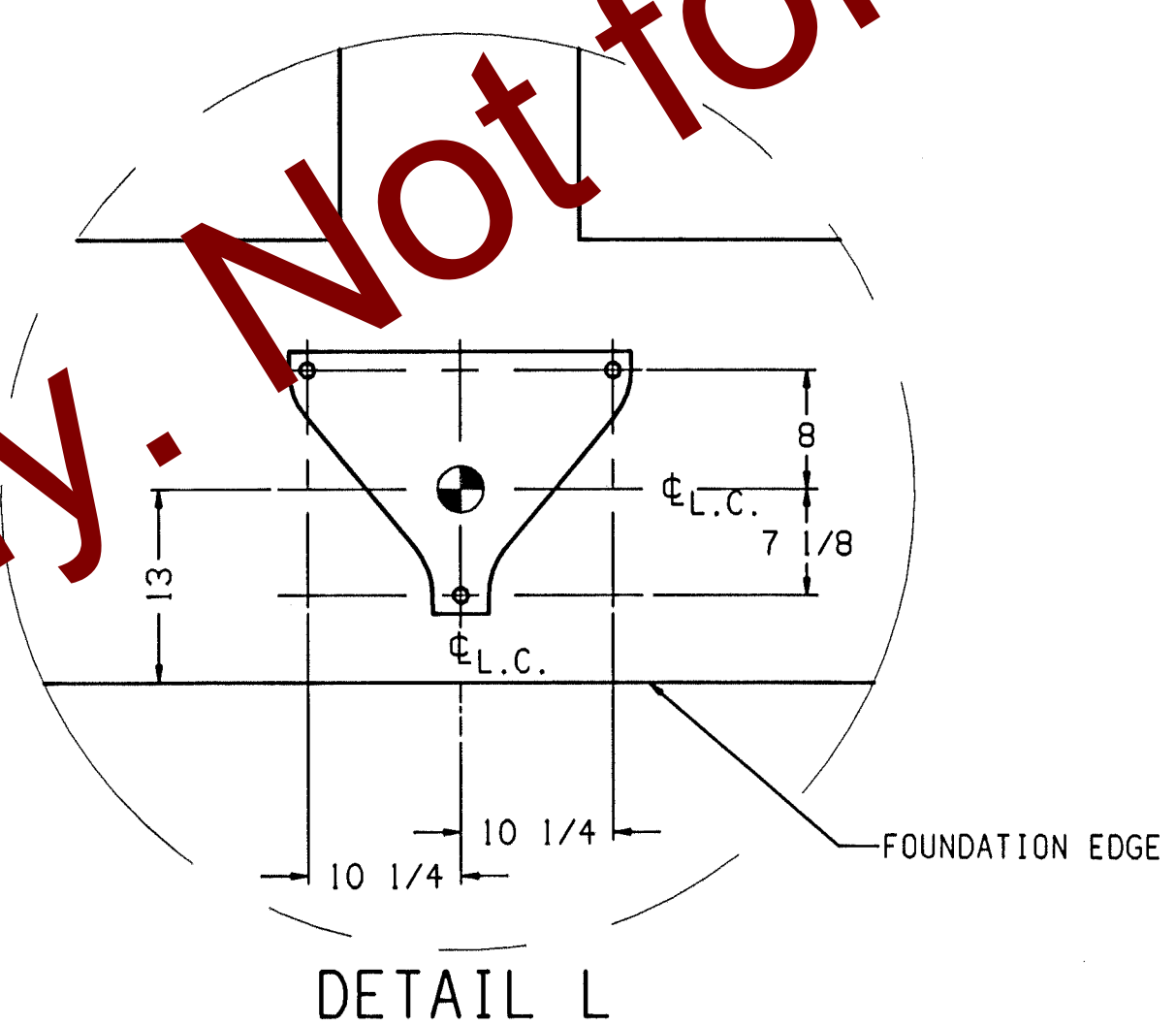
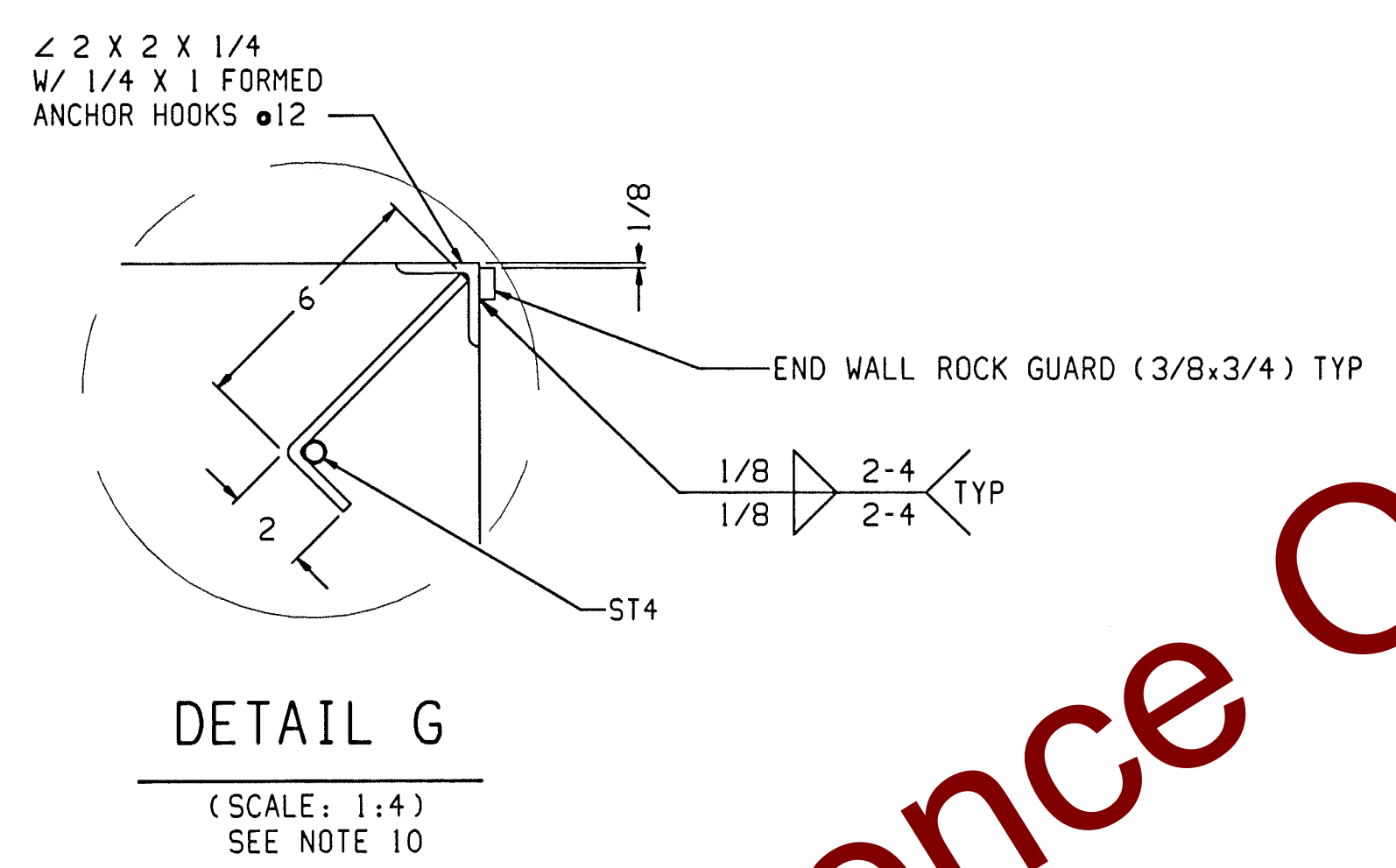
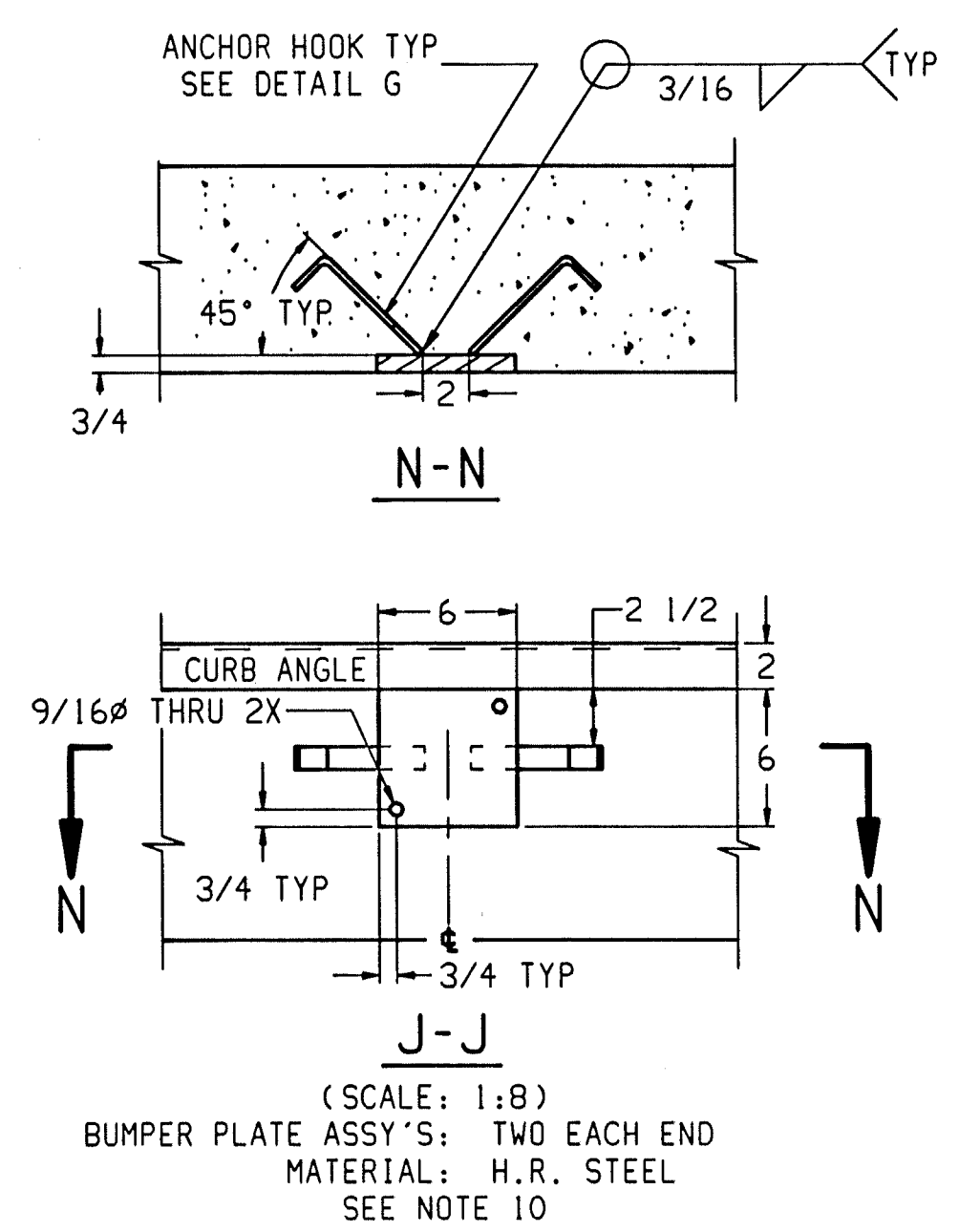
MATERIAL SUMMARY *

CONCRETE (CU. YDS.)	44
REINFORCING STEEL (LBS)	3948
WWF: 6x6-W1.4xW1.4 (SQ. FT.)	1138

* REFER TO SCALE GENERAL LAYOUT DRAWING FOR DECK CONCRETE AND REINFORCING STEEL SPECIFICATIONS.

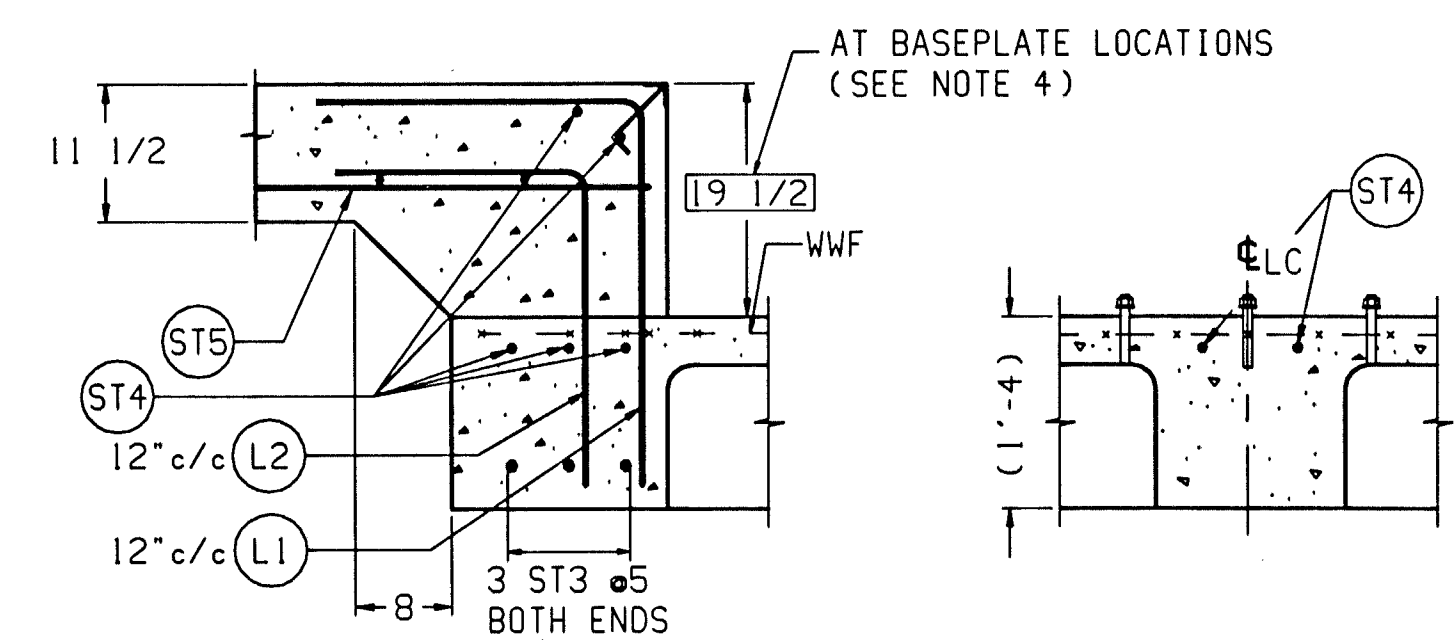
REINFORCING STEEL SCHEDULE (A.S.T.M. A-615 GRADE 60)

SYM	QTY	SIZE	LOCATION, DIRECTION	A		
				A	B	WGT
ST1	40	#6	FLOOR BEAMS, LONG.	40'-0"		2400
ST2	20	#6	FLOOR BEAMS, LONG.	10'-6"		316
ST3	6	#6	END FOOTERS, LATERAL	13'-3"		119
ST4	10		ENDS, LATERAL			138
	20	#5	APPROACHES, LATERAL	13'-3"		276
	10		FOOTERS, LATERAL			138
ST5	28	#5	APPROACHES, LONG.	9'-6"		278
L1	28	#5	APPROACH TO END TIES	2'-8"	2'-8"	156
L2	28	#5	APPROACH TO END TIES	2'-2"	2'-2"	127



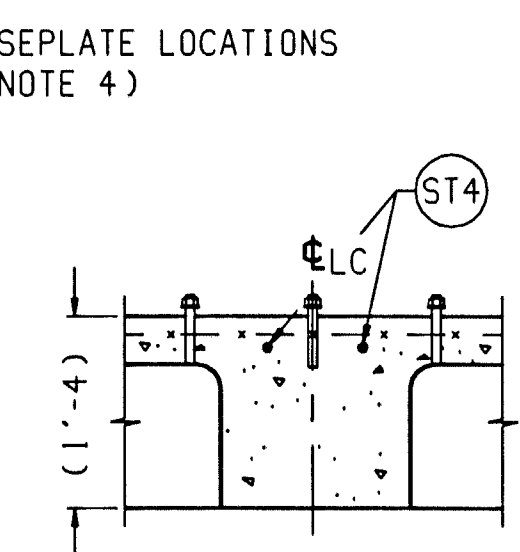
SECTION B-B

(SCALE 1:16)



SECTION C-C

(SCALE 1:16)
(TYPICAL END WALL)



SECTION D-D

(SCALE 1:16)
(TYPICAL)

REV	CHANGE	BY	DATE	SCALE 1:50
A	CHANGED FDN LENGTH FROM 80'-2 1/2	JEB	9/28/98	DATE 7/22/98
	ADDED AND UPDATED SCALES			DRN SEH APPD
				TITLE 7531 FOUNDATION; BEAM SLAB 80' X 11', KD
				UNLESS OTHERWISE SPECIFIED, ALL DIMENSIONS ARE IN INCHES, AND DIMENSIONAL TOLERANCES ARE:
				FRACTIONAL .XX ±.02 ANGULAR ±.5°
				1/32 .XX ±.005
				METTLER TOLEDO
				THIS PRINT IS FURNISHED WITH THE UNDERSTANDING THAT THE ESSENCE THEREOF WILL NOT BE REPRODUCED IN WHOLE OR IN PART WITHOUT WRITTEN AUTHORIZATION OF METTLER-TOLEDO, INC. ALL DESIGNS ARE THE PROPERTY OF METTLER-TOLEDO, INC. AND WILL BE PROTECTED BY PATENTS.
				TC203673
				REV A